



Infinity Commercial Furniture

AUTEX RANGE

ACOUSTIC COLLECTION.



Cube Gherkin

AUTEX.

OUR ACOUSTIC RANGE

Welcome to Infinity Commercial Furniture's Acoustic collection featuring Autex's innovative acoustic range. Crafted with precision and expertise, our Cube, Acoustic Timber, and Willie Weston screens are designed to elevate any workspace environment. Utilising Autex's advanced acoustic materials, our screens offer a diverse selection of colours and finishes, ensuring seamless integration with any office aesthetic. Whether you're seeking a modern, minimalist look or a more rustic charm, our acoustic screens provide the perfect balance of style and functionality.

Our screens are meticulously engineered to deliver unparalleled acoustic performance, offering solid colours and smooth finishes without the need for additional edging or capping. Beyond their aesthetic appeal, these screens are highly durable, ensuring long-term stability and performance in any workspace setting. Their versatility allows for effortless customisation, adding depth and texture to your workspace unlike traditional paint options. With a sophisticated colour palette to choose from, our acoustic range offers endless possibilities for creating a workspace that inspires creativity and productivity.



CUBE.

CATEGORY 1



FLATIRON



SAVOIE



EMPIRE



MURALLA



GHERKIN



OPERA



Cube Savoie

ACOUSTIC CUBE.

CATEGORY 2



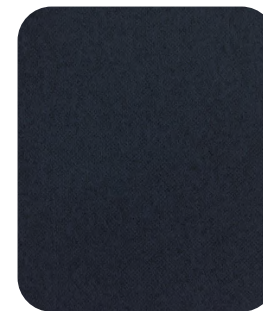
ACROS



TREE HOUSE



FALLING WATER



PINNNACLE



CANYON



TERRACE



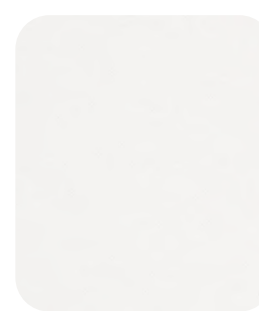
HIGHLAND



PETRONAS



HERALD



PAVILLION



CASPIAN



CAVALIER



SARGAZO



SENADO



BEEHIVE



PARTHENON

Collection
Cube

Brand
Autex Acoustics

Form
Panel

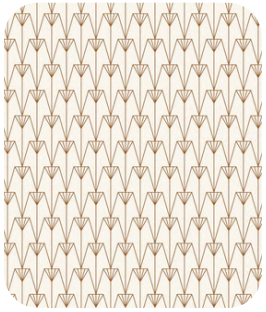
NRC
0.45 - 0.80

Composition
100% Polyester Fibre

Thickness
12mm and 24mm

ACOUSTIC PATTERN.

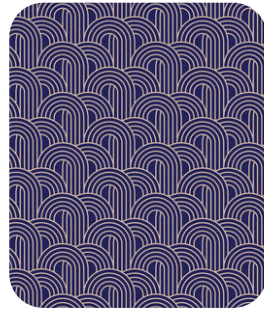
CATEGORY 3



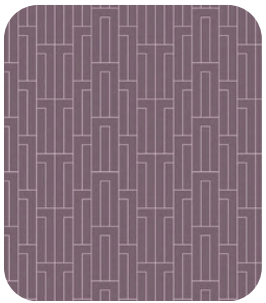
PALMS



COLUMNS



ARCHES



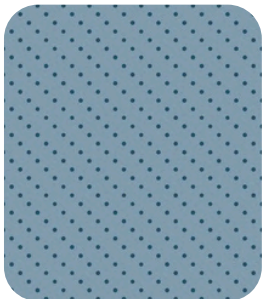
ZIGGURAT



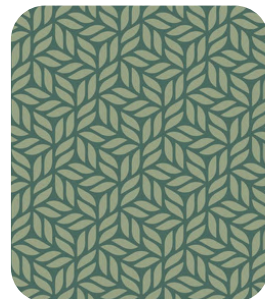
FLAX



TESSELATE



DOTS



LEAVES



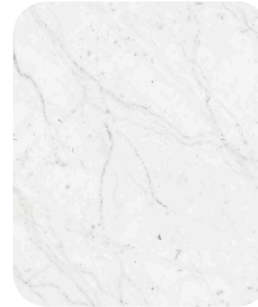
Pattern Leaves



Statuario Rose

ACOUSTIC STONE.

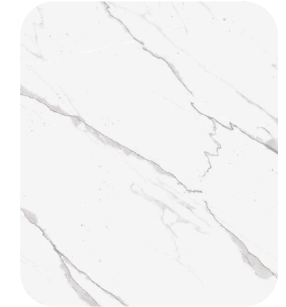
CATEGORY 3



CARRARA



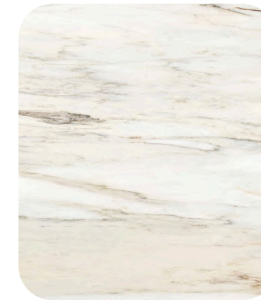
TRAVERTINE



STATUARIO



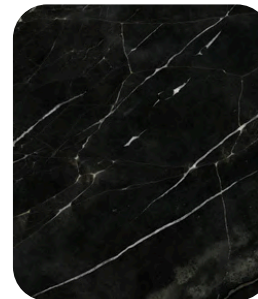
SAN PEDRO



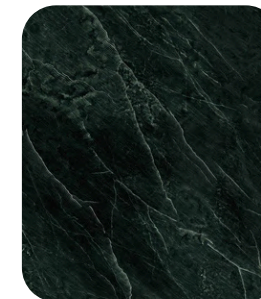
STATUARIO ROSE



ROJO ALICANTE



FOSSENA



EMPRESS GREEN

ACOUSTIC TEXTURE.

CATEGORY 3



BEIGE STUCCO



OXIDE



CONCRETE



GREY STUCCO



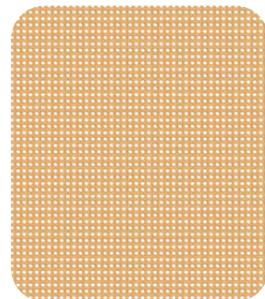
CANVAS



WEAVE



CORK



RATTAN



Texture Concrete

ACOUSTIC TIMBER.

CATEGORY 3



BLUE GUM



TASMANIAN BLACKWOOD



GREY IRONBACK



BLACK WALNUT



BIRCH



AMERICAN ASH



HOOP PINE



QUEENSLAND WALNUT



JARRAH



WHITEWASH GUM



YAKISUGI BLACK



OAK



EUCALYPTUS



TASMANIAN OAK



NORDIC OAK



AGED OAK



BLACK BUTT

Collection

Acoustic Timber

Brand

Autex Acoustics

Form

Panel

NRC

0.45 - 0.80

Composition

100% Polyester Fibre

Thickness

12mm and 24mm

WILLIE WESTON.

CATEGORY 4



ONENESS
LICHEN



ONENESS
HEATH



ONENESS
TUSSOCK



ONENESS
PLUM



RENEWED
PEARL



RENEWED
PEBBLE



RENEWED
WILD VIOLET



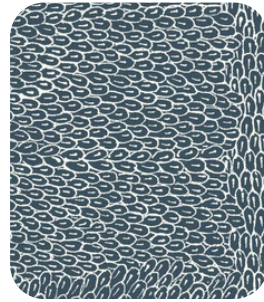
RENEWED
GREILLEA



DURRMU (KK)
BERRY



DURRMU (KK)
OBSIDIAN



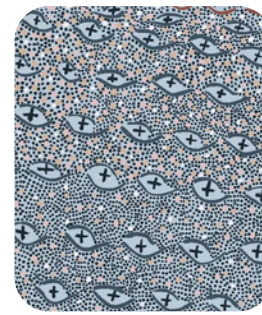
NATIVE SEEDS
MINERAL



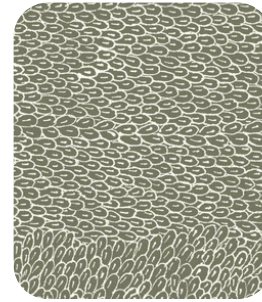
SUGERBAG DREAMING
GHOST GUM



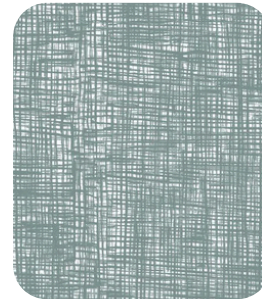
SYAW (FISH NET)
WOOLLYBUTT



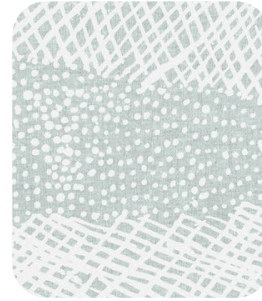
DURRMU (KK)
PIPPI



NATIVE SEEDS
OLIVE



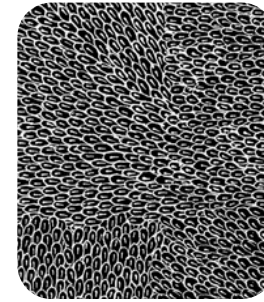
SYAW (FISH NET)
SEA SPRAY



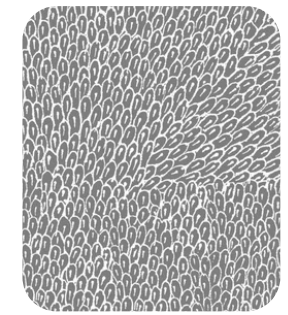
JILAMARA
INLET



DURRMU (KK)
TERRA



NATIVE SEEDS
MIDNIGHT



NATIVE SEEDS
CASSIA



SUGERBAG DREAMING
SALT BUSH

Collection
Willie Weston

Brand
Autex Acoustics

Form
Panel

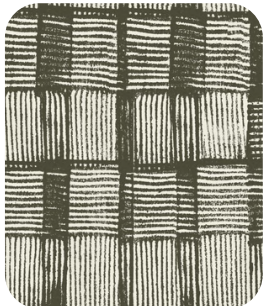
NRC
0.45 - 0.80

Composition
100% Polyester Fibre

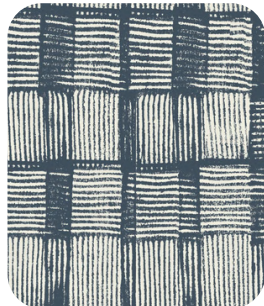
Thickness
12mm and 24mm

WILLIE WESTON.

CATEGORY 4



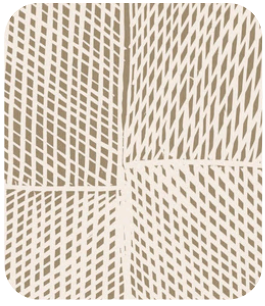
WATER LEVELS
MOSS



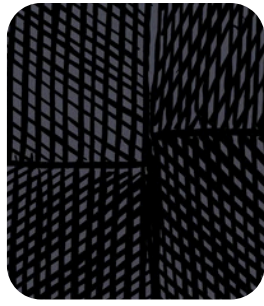
WATER LEVELS
MARINE



JILAMARA
SAND



WAK WAK
MUD FLATS



WAK WAK
MUD FLATS



JILAMARA
STONE



PANDANUS
STONE



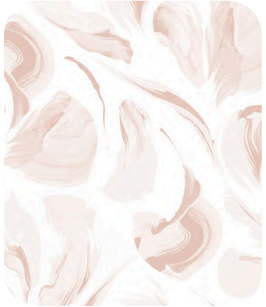
PANDANUS
EUCALYPT



Willie Weston Syaw (Fish Net) Sea Spray

EMMA HAYES.

CATEGORY 4



BLUSH



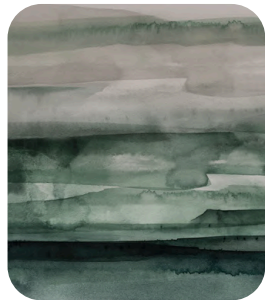
LAKESIDE



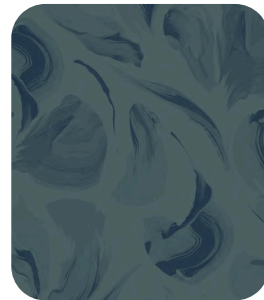
MODULATIONS



NEBULA



SEDIMENT



SHADOW



VEIL



VINE

Collection

Emma Hayes

Brand

Autex Acoustics

Form

Panel

NRC

0.45 - 0.80

Composition

100% Polyester Fibre

Thickness

12mm and 24mm

CARE AND MAINTENANCE.

GENERAL CARE - AVOID THE FOLLOWING CONDITIONS

- Prolonged exposure to direct sunlight
- Any heat source (ie. radiator or heater)
- Sharp objects (buckles, jewellery, keys, pet claws etc)
- Common cleaning materials, paints, solvents, nail varnish, dyes and felt pens

GENERAL CARE - INSTRUCTIONS

- Vacuum furniture regularly with the appropriate attachment
- Do not scrub with a stiff brush
- Allow thorough drying before re-use
- Remove any excess spills from the furniture surface

GENERAL CARE - INSTRUCTIONS

ICF's Acoustic products are extremely durable and require little attention to maintain their good looks. Light vacuuming on a regular basis will prevent dust build up, and most marks can be cleaned with a mild detergent solution followed by rinsing and blotting. Stains should be dealt with according to the chart below. Before carrying out a proposed cleaning method, patch test on a concealed section to ensure it will not affect the adhesive or product. Avoid severe abrasion. Spot clean only. Vacuum to restore pile, but do not use a stiff brush. Autex Acoustic products are designed with good health and hygiene in mind and can be disinfected to prevent germs and pathogens. Autex Acoustics recommends disinfecting product surfaces using isopropanol (isopropyl alcohol) or ethanol diluted to 70 percent with water. Disinfectants containing quaternary ammonium compounds may also be effective

GENERAL CARE - STAIN REMOVAL

ICF recommends that you contact professional cleaning experts if you require further assistance with the cleaning and maintenance of Autex Acoustic products. Always read the directions for use on cleaning product labels to avoid poisoning or injury. Never mix cleaning products, doing so can result in poisonous fumes and serious breathing problems. Ventilate your work area well by opening a window or door and running an exhaust fan. Always wear rubber gloves, safety goggles, and protective clothing when using very strong cleaners

STAIN REMOVAL.

KEY

- A** Mop up excess as soon as possible with a sponge or cloth
- B** Remove surplus with a knife edge or appropriate instrument
- C** Sponge with a solution of carpet shampoo working from well outside the stain in a circular motion towards the centre (this avoids spreading the stain).
Sponge afterwards with clean warm water and mop excess moisture with a clean dry cloth or sponge. Allow to dry, then brush gently with a soft brush. If any stain remains, sponge with a solution of one part household bleach to six parts clear water. Thoroughly rinse after treatment.
- D** Lightly sponge with household dry cleaning fluid and blot. Apply sparingly, as the substance may have an adverse effect on the adhesive
- E** Lubricate the stain with glycerine or petroleum jelly.
- F** Apply nail polish remover. The nail polish remover should not include lanolin or be of a greasy nature.
- G** Sponge with turpentine (or substitute)
- H** Freeze with ice cubes and scrape away while cold
- I** Clean with regular extractive carpet cleaner (if possible)
- J** Use a circular cutter and remove the damaged portion. Re-glue new piece into place

STAIN	TREATMENT GUIDE			
Blood	A	C		
Burn/Scorch Mark	J			
Chewing Gum	B	C	D	H
Chocolate	B	C	D	
Cooking Oils	B	C	D	
Crayon/Colour Markers	B	C	D	
Drinks (Cola, tea, juices, beer)	A	C		
Dust/Dirt	Vacuum, then I or C			
Grease	B	C	D	
Ink (ballpoint)	D			
Ink (fountain)	A	C		
Cosmetics	B	C	D	
Mildew	C			
Mud	B	C		
Nail Polish	A	F		
Oil	B	C	D	
Paint (Water Based)	A	C	E	
Paint (Oil Based)	A	C	D	G
Sauces	B	C	D	
Shoe Polish	B	C	D	
Wine	A	Add Salt	C	

ICF'S ACOUSTIC RANGE.

CARBON NEUTRAL

Our acoustic collection is not just functional; they're sustainable. Locally crafted from carbon-neutral acoustic panels and produced in Autex's carbon-neutral manufacturing facilities, our workstation solutions embody our sustainable, smart design philosophy by prioritising material optimisation to minimise waste, ensuring more environmentally conscious products and projects

TELARC REGISTERED - ISO 14001 – ENVIRONMENTAL MANAGEMENT

Autex manufactures under environmental management processes that are ISO certified. This certification gives assurance that we manage any environmental impacts within our operations.

DECLARE - RED LIST FREE

The ingredients in our acoustic screens have been reviewed against the Living Future Challenge Red List and achieve a Third-Party Verified 'Red List Free' status. Products achieve the highest 'LBC Red List Free' status when:

- Ingredients are 100% disclosed and are not found in the Red List
- Products are shown to meet VOC emissions limits

GREEN TAG CERTIFIED

GreenRate is a globally recognised multi-attribute environmental certification that scores products on a range of environmental, health, and social measures. All Autex Acoustics products are certified to achieve GreenRate Level A.

HEALTH PRODUCT DECLARATION

A Health Product Declaration (HPD) is a document that reports the ingredients of a product and the health effects associated with these ingredients. HPDs have been generated for all Autex Acoustics products.

